



#9817

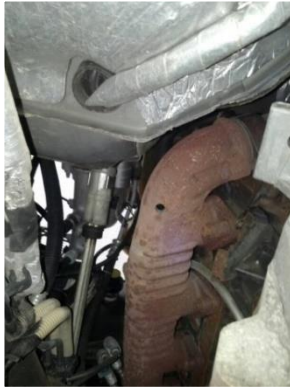
## EGT Sensor & Module Kit

### What's included in the kit:



### Step 1)

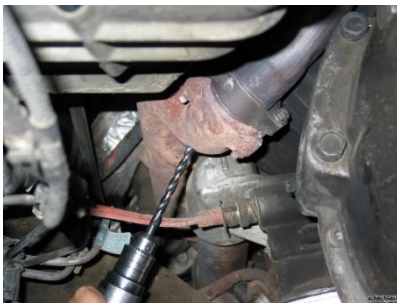
Locate the exhaust manifold on the driver's side of the vehicle. The area of the manifold to be drilled and tapped is located at the rear of the manifold near the driveline of the vehicle.



6.0L Sensor Location

### Tech Tip:

Use a generous amount of heavy grease on the drill bit and tap to capture any metal shavings or contaminants left as a result of the drilling and tapping process. Always use a small magnet after the process to ensure that you have retrieved any metal shavings prior to installation of the thermocouple.



7.3L Sensor Location

### Step 2)

Drill a 5/16" hole in the manifold. Using a 1/8" National Pipe Tap (NPT), which can be purchased at any hardware store, tap the hole. Be sure to follow the instructions included with the tap. The tap will be tapered and you want to tap the hole only until the threads of the tap are slightly deeper than the inside of the manifold. Be careful not to tap too deeply into the manifold as the fitting on the thermocouple will have to be screwed in deeply.



1/8" NPT



5/16" Drill Bit

### Step 3)

Once the drilling and tapping are complete, check to make sure there are no metal shavings in the manifold. If you see shavings or contaminants, remove them before inserting the thermocouple. Install the fitting by screwing the tapered end of the fitting into the manifold. The tip of the fitting should be flush with the inside of the exhaust path, but not any deeper. Tighten the fitting with a small wrench or socket, but be sure not to over-torque the fitting. Insert the probe into the fitting so that the tip is in the center of the exhaust flow path. Tighten the top nut on the fitting just tight enough to keep the thermocouple firmly in position. Install the EGT Thermocouple into the Manifold EGT Probe, then install the EGT Probe into the Exhaust Manifold.

### Step 4)

Locate a place for the EGT module. This can be any place you choose, but it should be kept away from any heat source and any sources of extreme vibration. Do not place on or near the engine. Use zip ties to secure the EGT module to the interior or firewall.

### Step 5)

You will need to run the EGT Sensor Cable or the Firewire cable through the firewall of the vehicle, depending upon whether you mounted the EGT module in the interior or exterior. Please note which cable you need to insert through the firewall prior to opening the OEM hole in the firewall. Use aluminum tape or equivalent to cover the OEM hole after the cable assembly has been routed into the interior. The Firewire Cable can be easily inserted between the driver's door sill and the dash to keep it hidden and secured. You may also want to perform some type of custom installation or routing of the cable based on your individual needs.

**Step 6)**

Once the cable routing is complete, plug the EGT sensor cable with two prong connector into the EGT module. Plug the Firewire cable into your device.

**X4 Setup**



**Livewire TS Setup**



**Step 7)**

You are now ready to connect your OBDII cable into your OBDII plug in your vehicle and navigate to the "Gauges/Datalog" screen to set your gauge up.